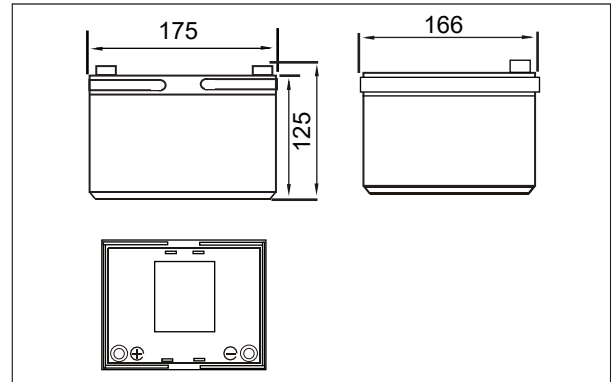


## Lithium Iron Phosphate (LiFePO4) Battery Specification

### SLAUMXLI30-12(12.8V30AH)



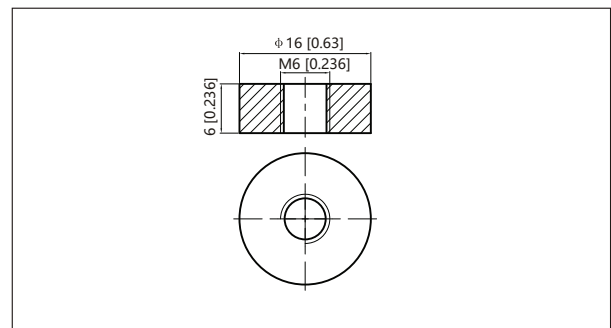
#### Outer dimensions (mm)



#### Specifications

Nominal Voltage		12.8V
Rated capacity (20 hour rate)		30Ah
Dimensions	Total Height	125 mm
	Height	125 mm
	Length	175 mm (6.93inches)
	Width	166 mm (6.58inches)
Weight Approx		3.9 Kg (8.16 lbs)
Terminal		M6

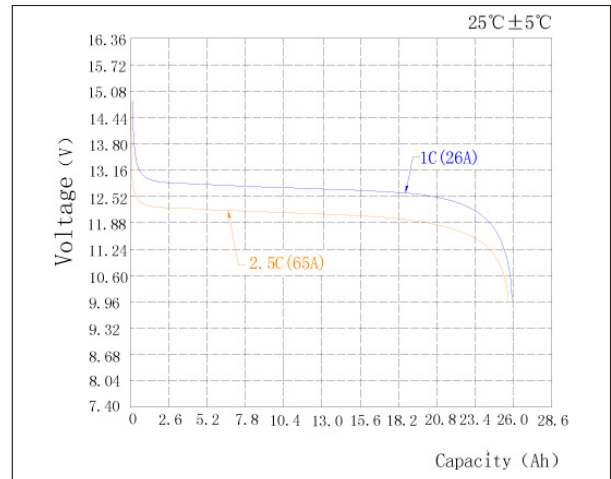
#### Terminal Type (mm)



#### Characteristics

Capacity Retention	>85% at 28 days	
Cycle Life	>85% at 1000 Cycles	
1.5 hour discharge to 10.5V	12 A	
Internal Resistance	<25 mΩ	
Charge Characteristics	Charge Voltage	14.6±0.1V
	Charger Current	<10A
Discharge Characteristics	Continuous Current	15A
	Maximum Pulse Current	60A(<3s)
	Discharge Cut-off Voltage	10V
Temperature	Charge Temperature	0°C-45°C(32°F-113°F)
	Discharge Temperature	-20°C-60°C(-4°F-140°F)
	Storage Temperature	0°C-40°C(32°F-104°F)

#### Discharge Curves 25°C(77°F)



#### Charge Curve 25°C (77°F)

